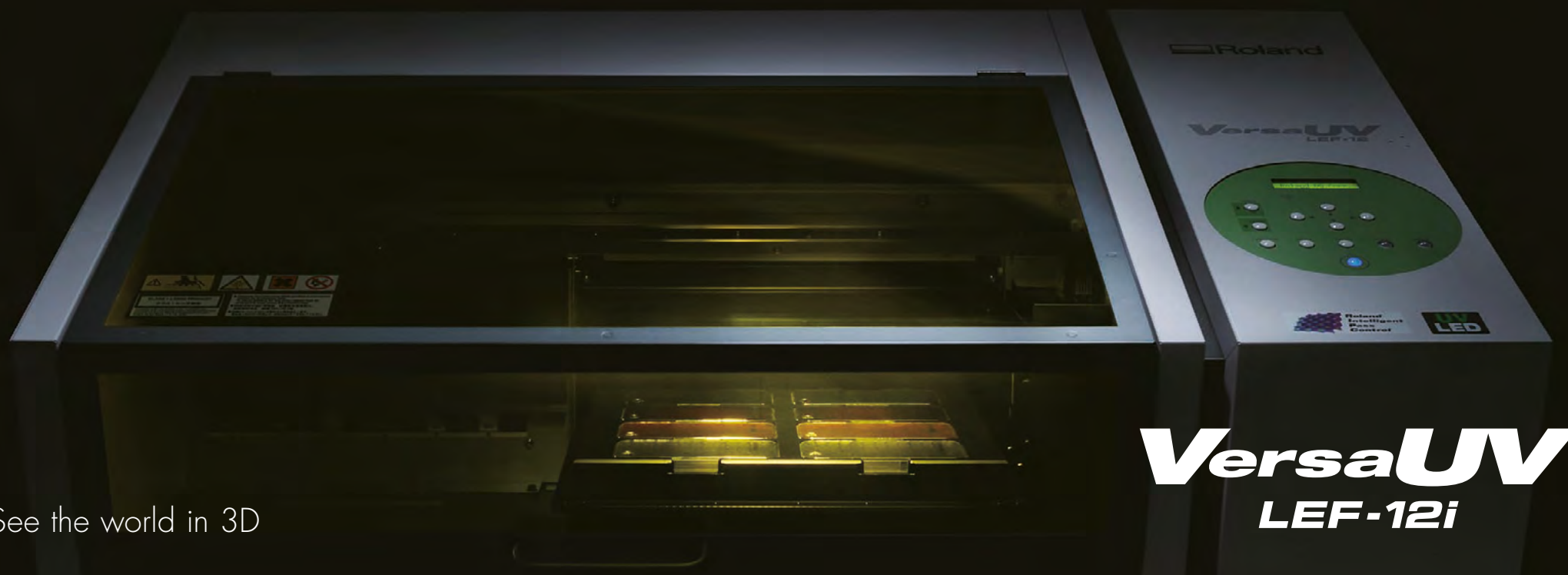
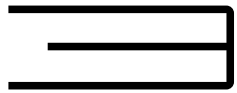


3D IMAGINATION



See the world in 3D

VersaUV
LEF-12i



Printing on 3D objects paves the way for limitless applications in your business

Extending the realm of your printing from flat substrates to the third dimension. Roland DG's UV-LED inkjet printer, the LEF-12i, allows you to print on 3D objects with a height of up to 100 mm (3.94"). Taking full advantage of our printing knowledge, the LEF-12i will enable you to create added-value personalisation and originality to a vast range of popular consumer items.

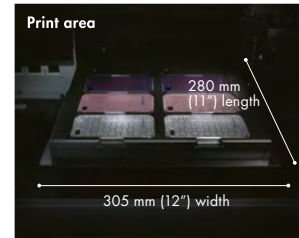
VersaUV

LEF-12i

Direct printing on 3D objects

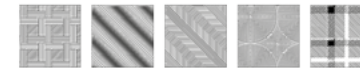
The LEF-12i is capable of printing anything on both flat and uneven surfaces for 3D objects up to 100 mm (3.94") thick. Because the integrated UV-LED lamp instantly cures ink during printing, it can print directly onto materials such as PET, ABS, PVC, polycarbonate, PS and other plastics, as well as papers and card stocks. The flatbed construction of the LEF-12i automatically adjusts the distance between the print-head and the surface of the material for optimum printing results.


*Unevenness of the surface must be 2 mm (0.08") or less.



Clear ink enhances the print quality and appearance

The inclusion of Roland DG's clear varnish enables users to produce unusual and creative textures on all materials. Among the advantages offered by the LEF-12i are high-grade gloss and matte finishes as well as 3D "impasto" effects that can be created by stacking many layers of clear ink. The LEF-12i offers 72 ready-to-use texture patterns, all of which are easy to incorporate into a design. With just one click you can create high-value exquisite, appealing and unique effects for your customers.



 Roland Texture System Library





High-density opaque white ink

The LEF-12i is compatible with ECO-UV high-density white ink in addition to full four-colour CMYK inks and clear varnish. The versatility of white ink delivers innovative text, logos and images onto coloured backgrounds. Use white ink as a base coat to add vivid colour printing on transparent PET base materials, or as a primer on darker materials. Being an inkjet printer, the LEF-12i dispenses with the time-consuming conventional plate-making process. This means it can deliver small batch jobs or just one item without a lengthy set-up process.



Environmentally and user friendly operation

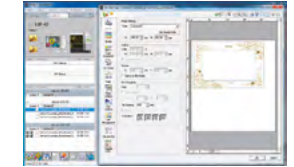
Equipped with long-life LED UV-curing lamp, the LEF-12i requires no warm-up time, making it efficient to use and cool to touch. This LED curing technology means it can be used in conjunction with delicate materials which, traditionally, have been difficult to dry efficiently. The LEF-12i includes a safety hood to protect the operator from UV light during operation and a screen to prevent dust falling on the surface of materials whilst printing.



With VersaWorks Dual RIP Software Included

Roland VersaWorks Dual
RIP & PRINT MANAGEMENT SOFTWARE

The LEF-12i includes the highly intuitive Roland VersaWorks Dual, the latest generation of our powerful and user-friendly RIP software. Packed with features to help maximise the efficiency, speed and quality of your output, VersaWorks Dual utilises PDF and PostScript® engines to deliver faster previewing times and improved handling of PDF, EPS PS files.



Quickly and easily preview and process complex files with transparencies, drop shadows, special colour layers and other special effects directly in the RIP to minimise the need for design software; saving time and simplifying the production process. Additionally rotate, set spacing and maintain clipped position within the RIP to give you more control when printing graphics and applying effects.



Full four-colour CMYK inks + white ink + clear varnish





VersaUV LEF-12i



Roland Texture System Library

Roland VersaWorks Dual
UV & PRINT MANAGEMENT SOFTWARE



Specifications		
Printing technology		Piezoelectric inkjet
Media	Dimensions	Maximum 335 (width) x 310 (length) x 100 (height) mm [13.2 x 12.2 x 3.94 in.]
	Weight	Maximum 5 Kg (11lbs.)
Printing width and length		Maximum 305 (width) x 280 (length) mm [12 x 11 in.]
Ink cartridges	Type and capacity	Roland ECO-UV 220 cc cartridge
	Colors	Six colors (cyan, magenta, yellow, black, white, and gloss)
Ink-curing unit		UV-LED Lamp
Printing resolution (dpi)		Maximum 1440 dpi
Distance accuracy *		Error of less than ±0.3% of distance traveled, or ±0.3 mm, whichever is greater
Connectivity		Ethernet (10BASE-T/100BASE-TX, automatic switching)
Power-saving function		Automatic sleep feature
Power requirements		AC 100 to 240 V ±10%, 1.8 A, 50/60 Hz
Power consumption	During operation	Approx. 156 W
	Sleep mode	Approx. 16.7 W
Acoustic noise level	During operation	60 dB (A) or less
	During standby	49 dB (A) or less
Dimensions		999 (width) x 862 (depth) x 549 (height) mm [39.3 x 33.9 x 21.7 in.]
Weight		85 Kg(187.4 lbs.)
Environment	Power on	Temperature: 20 to 32°C (68 to 90°F) (22°C/72°F or higher recommended), Humidity: 35 to 80% RH (non-condensing)
	Power off	Temperature: 5 to 40°C (41 to 104°F), Humidity: 20 to 80% RH (non-condensing)
Included items		Power cord, Adhesive sheet, Software RIP (Roland VersaWorks Dual), and User's manual, etc.

* Temperature: 25°C (77°F), humidity: 50%

Options		
	Model	Description
ECO-UV ink	EUV4-CY	Cyan, 220cc
	EUV4-MG	Magenta, 220cc
	EUV4-YE	Yellow, 220cc
	EUV4-BK	Black, 220cc
	EUV4-WH	White, 220cc
	EUV4-GL	Gloss, 220cc
Cleaning liquid	SL-CL	1 pc.
Adhesive sheet	AS-10	For securing material, 210 mm x 140 mm (8-1/4 in. x 5-1/2 in.), 10 sheets

Roland VersaWorks Dual System Requirements	
Operating System	Windows® 10 (32/64-bit) Windows® 8/8.1 (32/64-bit) Windows® 7 Ultimate/Professional (32/64-bit)
CPU	Intel® Core™ 2 Duo, 2.0 GHz or faster recommended
RAM	2 GB or more recommended
Video card and monitor	A resolution of 1,280 x 1,024 or more recommended
Free hard-disk space	40 GB or more recommended
Optical drive	DVD-ROM drive
Other	Internet connection and web browser to use Roland@NET and VersaWorks Online

*Roland VersaWorks Dual is a 32-bit application, which runs on 64-bit Windows® with WoW64 (Windows 32-bit on Windows 64-bit). *Windows® RT is excluded.

Optional Air Filtration System



An optional air filtration system is available for the LEF-12i. This includes an activated carbon filter which effectively removes the odour and volatile substances that occur during printing. This unit can be placed easily underneath the LEF-12i.



Vapourised components may slightly irritate the eyes, nose and/or throat during and following printing with this product. If continuously printing in a closed space, the density of volatile compositions will accumulate and may irritate the eyes, nose and /or throat. Roland DG strongly recommends that you install a ventilation system and use this product in a well-ventilated room. For more information, please contact your local distributor or dealer.

About White Ink

Due to the nature of white ink, the pigment will settle in the cartridge and ink flow system, requiring you to shake the cartridge before each use.

Roland DG reserves the right to make changes in specifications, materials or accessories without notice. Your actual output may vary. For optimum output quality, periodic maintenance to critical components may be required. Please contact your Roland DG dealer for details. No guarantee or warranty is implied other than expressly stated. Roland DG shall not be liable for any incidental or consequential damages, whether foreseeable or not, caused by defects in such products. Customers are responsible for observing related laws and ordinances if printed materials will be in direct contact with food or beverage. PANTONE® is the property of Pantone LLC. All other trademarks are the property of their respective owners. Reproduction or use of copyrighted material is governed by local, national, and international laws. Customers are responsible for observing all applicable laws and are liable for any infringement. Roland DG Corporation has licensed the MMP technology from the TPL Group.

Imagine.  **Roland**

Roland DG (UK) Ltd
Griffin House
Windmill Road
Clevedon
North Somerset
BS21 6UJ

Tel | 01275 335 540
Fax | 01275 335 541

www.rolanddg.co.uk